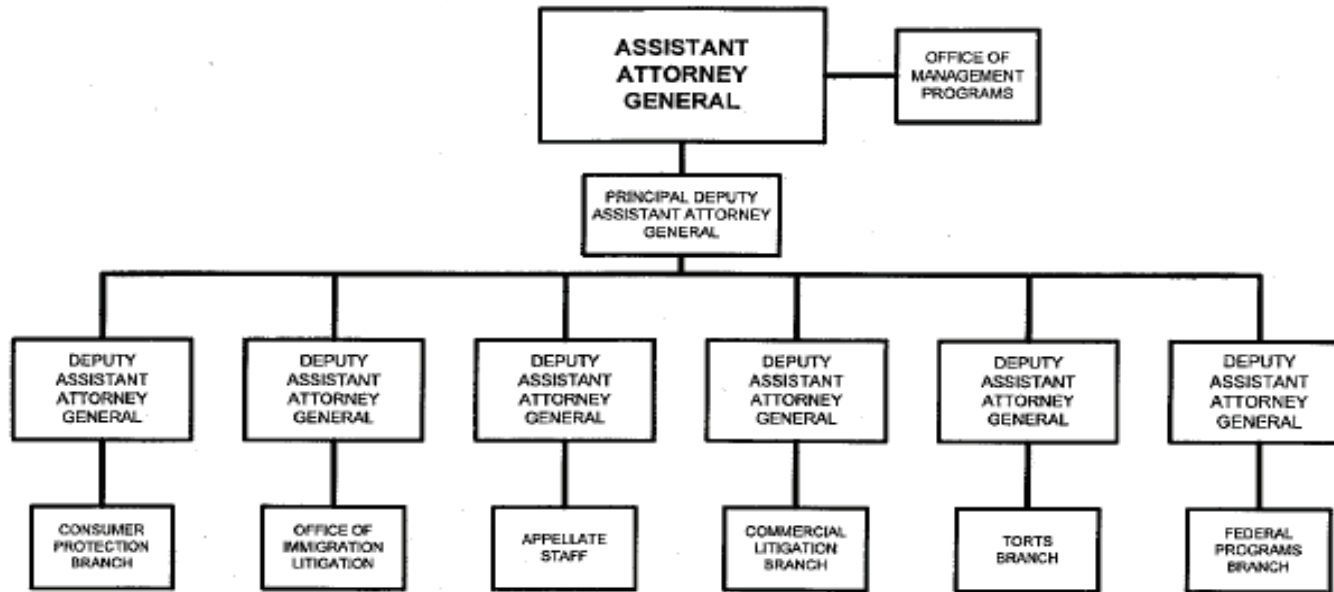
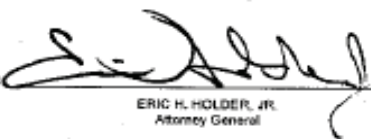


CIVIL DIVISION



Approved by: 
ERIC H. HOLDER, JR.
Attorney General

Date: April 3, 2012

B. Summary of Requirements

Summary of Requirements

Civil Division
Salaries and Expenses
(Dollars in Thousands)

	2017 Request		
	Direct Pos.	Estimate FTE	Amount
2015 Enacted 1/	1,325	1,168	291,454
2016 Enacted	1,325	1,189	292,214
Base Adjustments			
Pay and Benefits	0	0	1,804
Domestic Rent and Facilities	0	0	12,689
Foreign Expenses	0	0	-3
Total Base Adjustments	0	0	14,490
Total Technical and Base Adjustments	0	0	14,490
2017 Current Services	1,325	1,189	306,704
Program Changes			
Increases:			
Immigration Enforcement	7	4	729
Elder Justice	2	1	558
Funding for E-Records	0	0	1,600
Subtotal, Increases	9	5	2,887
Total Program Changes	9	5	2,887
2017 Total Request	1,334	1,194	309,591
2016 - 2017 Total Change	9	5	17,377

^{1/} FY 2015 FTE is actual.

B. Summary of Requirements

Summary of Requirements

Civil Division
Salaries and Expenses
(Dollars in Thousands)

Program Activity	2015 Enacted			2016 Enacted			2017 Technical and Base Adjustments			2017 Current Services		
	Direct Pos.	Actual FTE	Amount	Direct Pos.	Est. FTE	Amount	Direct Pos.	Est. FTE	Amount	Direct Pos.	Est. FTE	Amount
Legal Representation	1,325	1,168	291,454	1,325	1,189	292,214	0	0	14,490	1,325	1,189	306,704
Total Direct	1,325	1,168	291,454	1,325	1,189	292,214	0	0	14,490	1,325	1,189	306,704
Balance Rescission			0			0			0			0
Total Direct with Rescission			291,454			292,214			14,490			306,704
Reimbursable FTE		142			237			0			237	
Total Direct and Reimb. FTE		1,310			1,426			0			1,426	
Other FTE:												
LEAP		0			0			0			0	
Overtime		3			3			0			3	
Grand Total, FTE		1,313			1,429			0			1,429	

Program Activity	2017 Increases			2017 Offsets			2017 Request		
	Direct Pos.	Est. FTE	Amount	Direct Pos.	Est. FTE	Amount	Direct Pos.	Est. FTE	Amount
Legal Representation	9	5	2,887	0	0	0	1,334	1,194	309,591
Total Direct	9	5	2,887	0	0	0	1,334	1,194	309,591
Balance Rescission			0			0			0
Total Direct with Rescission			2,887			0			309,591
Reimbursable FTE		15			0			252	
Total Direct and Reimb. FTE		20			0			1,446	
Other FTE:									
LEAP		0			0			0	
Overtime		0			0			3	
Grand Total, FTE		20			0			1,449	

FY 2017 Program Increases/Offsets by Decision Unit

Civil Division
 Salaries and Expenses
 (Dollars in Thousands)

Program Increases	Location of Description by Program Activity	Legal Representation				Total Increases			
		Direct Pos.	Agt./Atty.	Est. FTE	Amount	Direct Pos.	Agt./Atty.	Est. FTE	Amount
Immigration Enforcement	Page 31	7	7	4	729	7	7	4	729
Elder Justice	Page 36	2	0	1	558	2	0	1	558
Funding for E-Records	Page 39	0	0	0	1,600	0	0	0	1,600
Total Program Increases		9	7	5	2,887	9	7	5	2,887

Program Offsets	Location of Description by Program Activity	Legal Representation				Total Offsets			
		Direct Pos.	Agt./Atty.	Est. FTE	Amount	Direct Pos.	Agt./Atty.	Est. FTE	Amount
No Program Offsets									
Total Program Offsets									

Resources by Department of Justice Strategic Goal and Objective

Civil Division
Salaries and Expenses
(Dollars in Thousands)

Strategic Goal and Strategic Objective	2015 Enacted		2016 Enacted		2017 Current Services		2017 Increases		2017 Offsets		2017 Total Request	
	Direct & Reimb FTE	Direct Amount	Direct & Reimb FTE	Direct Amount	Direct & Reimb FTE	Direct Amount	Direct & Reimb FTE	Direct Amount	Direct & Reimb FTE	Direct Amount	Direct & Reimb FTE	Direct Amount
Goal 2 Prevent crime, protect the rights of the American people, and enforce federal law												
2.4 Investigate and prosecute corruption, economic crimes, and transnational organized crime.	80	17,846	80	13,373	80	14,865	1	558	0	0	81	15,423
2.6 Protect the federal fisc and defend the interests of the United States	1,230	273,608	1,346	278,841	1,346	291,839	19	2,329	0	0	1,365	294,168
Subtotal, Goal 2	1,310	291,454	1,426	292,214	1,426	306,704	20	2,887	0	0	1,446	309,591
TOTAL	1,310	291,454	1,426	292,214	1,426	306,704	20	2,887	0	0	1,446	309,591

Justifications for Technical and Base Adjustments

Civil Division
Salaries and Expenses
(Dollars in Thousands)

	Direct Pos.	Estimate FTE	Amount
Pay and Benefits			
1 <u>2017 Pay Raise</u> This request provides for a proposed 1.6 percent pay raise to effective in January of 2017. The amount requested, \$1,998,000, represents the pay amounts for 3/4 of the fiscal year plus appropriate benefits (\$1,558,000 for pay and \$440,000 for benefits).	0	0	1,998
2 <u>Annualization of 2016 Pay Raise</u> This pay annualization represents first quarter amounts (October through December) of the 2016 pay increase of 1.3 percent included in the 2016 President's Budget. The amount requested \$655,000, represents the pay amounts for 1/4 of the fiscal year plus appropriate benefits (\$511,000 for pay and \$144,000 for benefits).	0	0	655
3 <u>Employee Compensation Fund</u> The -\$3,000 request reflects anticipated changes in payments to the Department of Labor for injury benefits under the Federal Employee Compensation Act.	0	0	-3
4 <u>Changes in Compensable Days</u> The cost of two less compensable days in FY 2017 compared to FY 2016 is calculated by dividing the FY 2016 estimated personnel compensation and applicable benefits by 262 compensable days. The cost of two less compensable days in FY 2017 is \$1,444,000.	0	0	-1,444
5 <u>Health Insurance</u> Effective January 2017, the component's contribution to Federal employees' health insurance increases by 3.9 percent. Applied against the 2016 estimate of \$9,030,000, the additional amount required is \$349,000.	0	0	349
6 <u>Retirement</u> Agency retirement contributions increase as employees under CSRS retire and are replaced by FERS employees. Based on U.S. Department of Justice Agency estimates, we project that the DOJ workforce will convert from CSRS to FERS at a rate of 0.8 percent per year, for both LEO and Non-LEO, based on the past 5 years of DOJ retirement data. The requested increase of \$249,000 is necessary to meet our increased retirement obligations as a result of this conversion.	0	0	249
Subtotal, Pay and Benefits	0	0	1,804

Justifications for Technical and Base Adjustments

Civil Division
Salaries and Expenses
(Dollars in Thousands)

	Direct Pos.	Estimate FTE	Amount
Domestic Rent and Facilities			
1 <u>GSA Rent</u> GSA will continue to charge rental rates that approximate those charged to commercial tenants for equivalent space and related services. The requested increase of \$3,476,000 is required to meet our commitment to GSA. The costs associated with GSA rent were derived through the use of an automated system, which uses the latest inventory data, including rate increases to be effective FY 2017 for each building currently occupied by Department of Justice components, as well as the costs for new space to be occupied.	0	0	3,476
2 <u>Guard Services:</u> This includes Department of Homeland Security (DHS) Federal Protective Service charges, Justice Protective Service charges and other security services across the country. The requested increase of \$76,000 is required to meet these commitments.	0	0	76
3 <u>Moves - FY 2017</u> GSA requires all agencies to pay relocation costs associated with lease expirations. This request provides for the costs associated with new office locations caused by the expiration of leases.	0	0	9,137
Subtotal, Domestic Rent and Facilities	0	0	12,689
Foreign Expenses			
1 <u>Overseas Capital Security Cost Sharing (CSCS):</u> Per P.L. 108-447 and subsequent acts, "all agencies with personnel overseas subject to chief of mission authority...shall participate and provide funding in advance for their share of costs of providing new, safe, secure U.S. diplomatic facilities, without offsets, on the basis of the total overseas presence of each agency as determined by the Secretary of State." Originally authorized for FY 2000-2004, the program has been extended annually by OMB and Congress and has also been expanded beyond new embassy construction to include maintenance and renovation costs of the new facilities. For the purpose of this program, State's personnel totals for DOJ include current and projected staffing. The estimated cost to the Department, as provided by State, for FY 2017 is \$146.4 million. The Civil Division currently has 3 positions overseas, and a funding decrease of \$3,000 is requested for this account.	0	0	-3
Subtotal, Foreign Expenses	0	0	-3
TOTAL DIRECT TECHNICAL and BASE ADJUSTMENTS	0	0	14,490

Crosswalk of 2015 Availability

Civil Division
Salaries and Expenses
(Dollars in Thousands)

Program Activity	2015 Enacted			Reprogramming/Transfers			Carryover	Rescission	Recoveries	2015 Availability		
	Direct Pos.	Actual FTE	Amount	Direct Pos.	Estim. FTE	Amount	Amount	Amount	Amount	Direct Pos.	Actual FTE	Amount
Legal Representation	1,325	1,168	291,454	0	0	-125	10,579	-3,847	314	1,325	1,168	298,375
Total Direct	1,325	1,168	291,454	0	0	-125	10,579	-3,847	314	1,325	1,168	298,375
Reimbursable FTE		142			0						142	
Total Direct and Reimb. FTE		1,310			0						1,310	
Other FTE:												
Overtime		3			0						3	
Grand Total, FTE		1,313			0						1,313	

Reprogramming/Transfers

Funds were transferred to the JIST Annual Account for enhanced cyber security IT procurements.

Carryover:

Funds were carried over into FY 2015 from GLA's 2014 no-year account.

Rescission:

A \$10 million unobligated balance rescission was spread among the GLA components' carryover funding.

Recoveries/Refunds

Direct recoveries from GLA's no-year accounts total \$314 thousand.

Crosswalk of 2016 Availability

Civil Division
Salaries and Expenses
(Dollars in Thousands)

Program Activity	2016 Enacted			Reprogramming/Transfers			Carryover	Recoveries	2016 Availability		
	Direct Pos.	Estim. FTE	Amount	Direct Pos.	Estim. FTE	Amount	Amount	Amount	Direct Pos.	Estim. FTE	Amount
Legal Representation	1,325	1,189	292,214	0	0	0	330	0	1,325	1,189	292,544
Total Direct	1,325	1,189	292,214	0	0	0	330	0	1,325	1,189	292,544
Reimbursable FTE		237			0					237	
Total Direct and Reimb. FTE		1,426			0					1,426	
Other FTE:											
Overtime		3			0					3	
Grand Total, FTE		1,429			0					1,429	

Carryover:

Funds were carried over into FY 2016 from GLA's 2015 no-year account.

Summary of Reimbursable Resources

Civil Division
Salaries and Expenses
(Dollars in Thousands)

Collections by Source	2015 Actual			2016 Estimate			2017 Request			Increase/Decrease		
	Reimb. Pos.	Reimb. FTE	Amount	Reimb. Pos.	Reimb. FTE	Amount	Reimb. Pos.	Reimb. FTE	Amount	Reimb. Pos.	Reimb. FTE	Amount
Bureau of Alcohol, Tobacco, Firearms and Explosives			194			12			12	0	0	0
Centers for Medicare & Medicaid Services (CMS)			78			0			0	0	0	0
Commodity Futures Trading Commission			684			0			0	0	0	0
Consumer Financial Protection Bureau			5,666			0			0	0	0	0
Consumer Product Safety Commission			25			15			15	0	0	0
Corps of Engineers			0			683			683	0	0	0
Department of Education			64			0			0	0	0	0
Department of Defense			7,100			7			7	0	0	0
Department of Energy			74			0			0	0	0	0
Department of Health and Human Services			340			0			0	0	0	0
Department of Homeland Security			99			100			100	0	0	0
Department of the Interior			112			113			113	0	0	0
Department of Justice			8,544			112			112	0	0	0
Department of Labor			28			0			0	0	0	0
Department of Transportation			769			0			0	0	0	0
Department of the Treasury			153			571			571	0	0	0
Department of the Treasury, Vaccine Injury Compensation	34	34	7,833	42	42	9,358	54	54	11,970	12	12	2,612
Department of Veteran Affairs			800			1,080			1,080	0	0	0
District of Columbia Government			641			306			306	0	0	0
Federal Bureau of Investigation			3,240			1,000			1,000	0	0	0
Federal Communications Commission			30			0			0	0	0	0
Federal Housing Finance Agency			400			0			0	0	0	0
Federal Reserve Board			4			0			0	0	0	0
Food and Drug Administration			250			329			329	0	0	0
General Services Administration			30			0			0	0	0	0
Health Care Fraud and Abuse Account (Mandatory Funding)	60	56	19,428	60	60	17,100	60	60	17,100	0	0	0
Health Care Fraud and Abuse Account (Discretionary Funding)	20	13	8,680	33	33	7,701	33	33	7,701	0	0	0
Millennium Challenge Corporation			0			500			500			0
National Labor Relations Board			100			100			100	0	0	0
Office of Debt Collection	53	39	80,131	105	102	107,216	105	105	107,216	0	3	0
Office of Personnel Management			634			500			500	0	0	0
US Attorneys			3,175			30			30	0	0	0
US Government Printing Office			0			23			23			0
US Postal Service			130			0			0	0	0	0
Anticipated Various Agencies			0			51,945			51,945	0	0	0
Budgetary Resources	167	142	149,436	240	237	198,801	252	252	201,413	12	15	2,612
Obligations by Program Activity	2015 Actual			2016 Estimate			2017 Request			Increase/Decrease		
	Reimb. Pos.	Reimb. FTE	Amount	Reimb. Pos.	Reimb. FTE	Amount	Reimb. Pos.	Reimb. FTE	Amount	Reimb. Pos.	Reimb. FTE	Amount
Legal Representation	167	142	149,436	240	237	198,801	252	252	201,413	12	15	2,612
Budgetary Resources	167	142	149,436	240	237	198,801	252	252	201,413	12	15	2,612

Note: The Reimbursable resources here include Health Care Fraud resources funded through direct collections that are elsewhere shown as direct resources. The Health Care Fraud resources are presented here to indicate that these positions, FTE, and amounts are not funded through DOJ direct appropriations.

I. Detail of Permanent Positions by Category

Detail of Permanent Positions by Category

Civil Division
Salaries and Expenses
(Dollars in Thousands)

Category	2015 Enacted		2016 Enacted		2017 Request				
	Direct Pos.	Reimb. Pos.	Direct Pos.	Reimb. Pos.	ATBs	Program Increases	Program Offsets	Total Direct Pos.	Total Reimb. Pos.
Attorneys (905)	953	127	953	190	0	7	0	960	200
Paralegal Specialist (0950)	140	16	140	21	0	0	0	140	23
Others	232	24	232	29	0	2	0	234	29
Total	1,325	167	1,325	240	0	9	0	1,334	252
Headquarters Washington D.C.	1,303	167	1,303	240	0	9	0	1,312	252
US Fields	21	0	21	0	0	0	0	21	0
Foreign Field	1	0	1	0	0	0	0	1	0
Total	1,325	167	1,325	240	0	9	0	1,334	252

Financial Analysis of Program Changes

Civil Division
Salaries and Expenses
(Dollars in Thousands)

Grades	Legal Representation				Total Program Changes	
	Program Increases		Program Decreases		Direct Pos.	Amount
	Direct Pos.	Amount	Direct Pos.	Amount		
GS-15	7	904	0	0	7	904
GS-13	2	186	0	0	2	186
Total Positions and Annual Amount	9	1,090	0	0	9	1,090
Lapse (-)	-4	-545	0	0	-4	-545
11.5 - Other personnel compensation		0		0		0
Total FTEs and Personnel Compensation	5	545	0	0	5	545
12.1 - Civilian personnel benefits		163		0		163
21.0 - Travel and transportation of persons		23		0		23
22.0 - Transportation of things		3		0		3
23.3 - Communications, utilities, and miscellaneous charges		22		0		22
24.0 - Printing and reproduction		4		0		4
25.2 - Other services from non-federal sources		2,018		0		2,018
25.3 - Other goods and services from federal sources		51		0		51
26.0 - Supplies and materials		4		0		4
31.0 - Equipment		54		0		54
Total Program Change Requests	5	2,887	0	0	5	2,887

Summary of Requirements by Object Class

Civil Division
Salaries and Expenses
(Dollars in Thousands)

Object Class	2015 Actual		2016 Availability		2017 Request		Increase/Decrease	
	Direct FTE	Amount	Direct FTE	Amount	Direct FTE	Amount	Direct FTE	Amount
11.1 - Full-time permanent	1,045	134,326	1,042	133,669	1,047	135,065	5	1,396
11.3 - Other than full-time permanent	123	13,867	147	16,710	147	16,752	0	42
11.5 - Other personnel compensation	[3]	2,029	[3]	2,201	[3]	2,201	0	0
<i>Overtime</i>	[3]	155	[3]	155	[3]	155	0	0
<i>Other Compensation</i>	0	1,874	0	2,046	0	2,046	0	0
11.8 - Special personal services payments	0	100	0	200	0	200	0	0
Total	1,168	150,322	1,189	152,780	1,194	154,218	5	1,438
Other Object Classes								
12.1 - Civilian personnel benefits		44,376		46,543		47,617	0	1,074
13.0 - Benefits for former personnel		6		10		10	0	0
21.0 - Travel and transportation of persons		3,038		3,420		3,443	0	23
22.0 - Transportation of things		758		783		786	0	3
23.1 - Rental payments to GSA		32,400		34,024		37,500	0	3,476
23.2 - Rental payments to others		584		609		609	0	0
23.3 - Communications, utilities, and miscellaneous charges		5,625		4,774		4,796	0	22
24.0 - Printing and reproduction		999		914		918	0	4
25.1 - Advisory and assistance services		1,897		1,500		1,500	0	0
25.2 - Other services from non-federal sources		38,752		34,293		37,645	0	3,352
25.3 - Other goods and services from federal sources		10,922		10,012		10,060	0	48
25.4 - Operation and maintenance of facilities		1,975		1,588		9,137	0	7,549
25.6 - Medical care		129		122		122	0	0
25.7 - Operation and maintenance of equipment		25		44		44	0	0
26.0 - Supplies and materials		918		867		871	0	4
31.0 - Equipment		3,804		261		315	0	54
42.0 - Insurance claims and indemnities		279		0		0	0	0
Total Obligations		296,809		292,544		309,591	0	17,047
Subtract - Unobligated Balance, Start-of-Year		-10,579		-330		0	0	330
Subtract - Transfers/Reprogramming		125		0		0	0	0
Subtract - Recoveries/Refunds		-314		0		0	0	0
Add - Rescission		3,847		0		0	0	0
Add - Unobligated End-of-Year, Available		330		0		0	0	0
Add - Unobligated End-of-Year, Expiring		1,236		0		0	0	0
Total Direct Requirements	0	291,454	0	292,214	0	309,591	0	17,377
Reimbursable FTE								
Full-Time Permanent	142		237		252		15	0

Footnote language: Direct FTE and obligations here do not include Health Care Fraud resources.