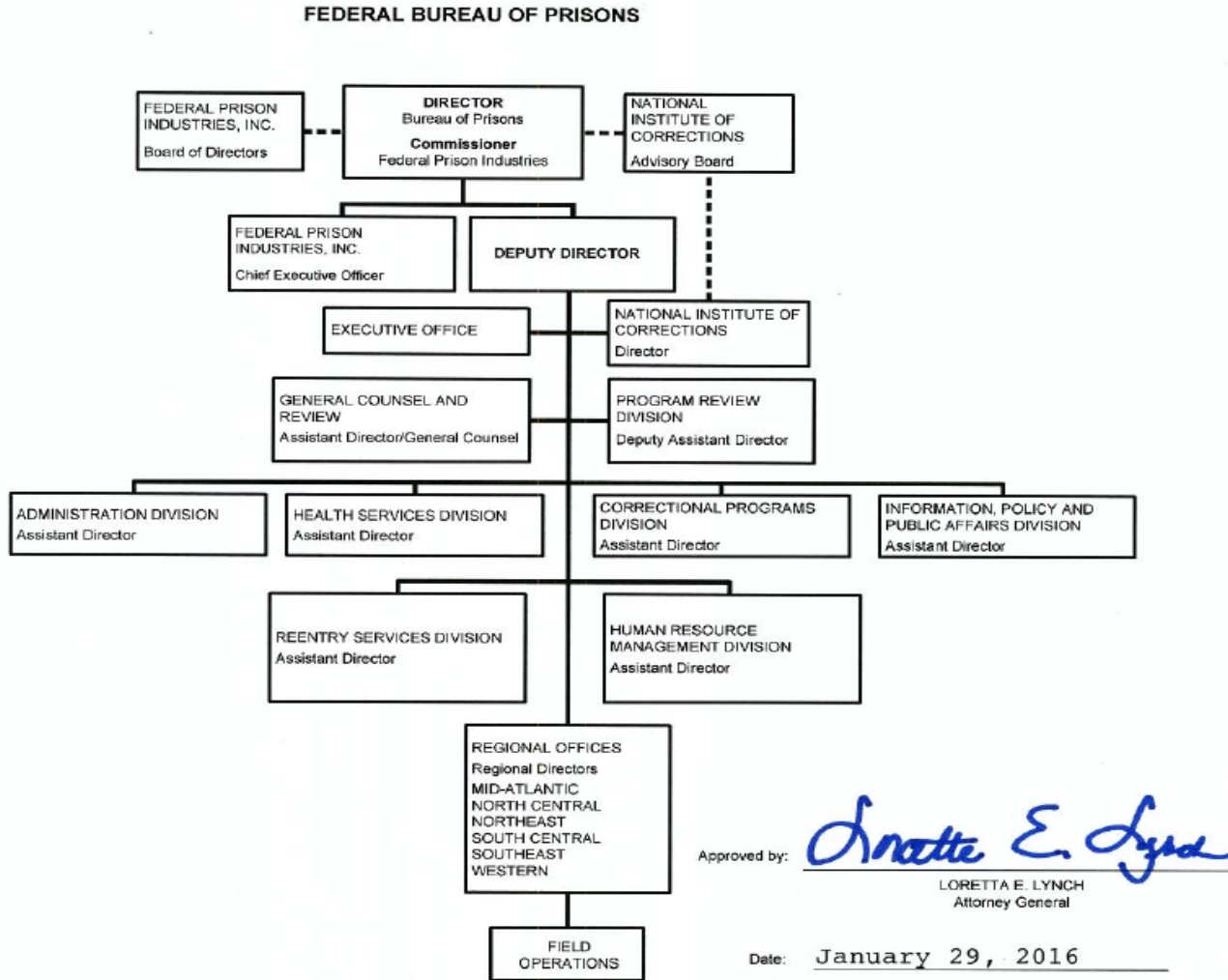


**A. Organizational Chart**



**B. Summary of Requirements**

**Summary of Requirements**  
 Federal Prison System  
 Federal Prison Industries  
 (Dollars in Thousands)

	FY 2021 Request		
	Direct Positions	FTE	Amount
2019 Enacted	1,950	621	717,577
2020 Enacted	1,950	753	699,105
<b>Technical Adjustments</b>			
Total Technical Adjustments	0	0	0
<b>Base Adjustments</b>			51,388
Total Base Adjustments	0	0	51,388
Total Technical and Base Adjustments	0	0	51,388
2021 Current Services	1,950	753	750,493
2021 Total Request	1,950	753	750,493
2021 Total Request (with Rescission)	1,950	753	750,493
2020 - 2021 Total Change	0	0	51,388

**B. Summary of Requirements**

**Summary of Requirements**  
 Federal Prison System  
 Federal Prison Industries  
 (Dollars in Thousands)

Program Activity	2019 Enacted			2020 Enacted			2021 Technical and Base Adjustments			2021 Current Services			2021 Request		
	Direct Pos.	Est. FTE	Amount	Direct Pos.	Est. FTE	Amount	Direct Pos.	Est. FTE	Amount				Direct Pos.	Est. FTE	Amount
Federal Prison Industries	1,950	621	717,577	1,950	753	699,105	0	0	51,388	1,950	753	750,493	1,950	753	750,493
<b>Total Direct</b>	<b>1,950</b>	<b>621</b>	<b>717,577</b>	<b>1,950</b>	<b>753</b>	<b>699,105</b>	<b>0</b>	<b>0</b>	<b>51,388</b>	<b>1,950</b>	<b>753</b>	<b>750,493</b>	<b>1,950</b>	<b>753</b>	<b>750,493</b>
Balance Rescission			0			0			0						0
Total Direct with Rescission			717,577			699,105			51,388			750,493			750,493
Reimbursable FTE		0			0			0			0			0	
Total Direct and Reimb. FTE		621			753			0			753			753	
Other FTE:															
LEAP		0			0			0			0			0	
Overtime		0			0			0			0			0	
Grand Total, FTE		621			753			0			753			753	

**E. Justification for Technical and Base Adjustments**

**Justifications for Technical and Base Adjustments**

Federal Prison System

Federal Prison Industries

(Dollars in Thousands)

	<b>Direct Pos.</b>	<b>Estimate FTE</b>	<b>Amount</b>
<b>Base Adjustment</b>			0
<u>Adjustment in Obligation Activities</u>			0
An increase of \$51,388 is estimated in FY 2021 as an adjustment in Obligation Activities			51,388
<b>Subtotal, Base Adjustment</b>	<b>0</b>	<b>0</b>	<b>51,388</b>
<b>TOTAL DIRECT TECHNICAL and BASE ADJUSTMENTS</b>	<b>0</b>	<b>0</b>	<b>51,388</b>

F. Crosswalk of 2019 Availability

**Crosswalk of 2019 Availability**

Federal Prison System  
 Federal Prison Industries  
 (Dollars in Thousands)

Program Activity	2019 Enacted			Reprogramming/Transfers			Carryover	Recoveries/Refunds	2019 Availability		
	Direct Pos.	Estim. FTE	Amount	Direct Pos.	Estim. FTE	Amount	Amount	Amount	Direct Pos.	Estim. FTE	Amount
Federal Prison Industries	1,950	621	717,577	0	0	0	177,127	0	1,950	621	894,704
<b>Total Direct</b>	<b>1,950</b>	<b>621</b>	<b>717,577</b>	<b>0</b>	<b>0</b>	<b>0</b>	<b>177,127</b>	<b>0</b>	<b>1,950</b>	<b>621</b>	<b>894,704</b>
Balance Rescission			0								0
Total Direct with Rescission			717,577								894,704
Reimbursable FTE		0			0		0			0	
Total Direct and Reimb. FTE		621			0		0			621	
Other FTE:											
LEAP		0			0		0			0	
Overtime		0			0		0			0	
Grand Total, FTE		621			0		0			621	

end of line

end of line

end of line

end of line

end of line

end of line

end of line

end of line

end of sheet

**Reprogramming/Transfers**

**Carryover:**

**Recoveries/Refunds:**

**G. Crosswalk of 2020 Availability**

**Crosswalk of 2020 Availability**

Federal Prison System  
 Federal Prison Industries  
 (Dollars in Thousands)

Program Activity	2020 Enacted			Reprogramming/Transfers			Carryover	Recoveries/ Refunds	2020 Availability		
	Direct Pos.	Estim. FTE	Amount	Direct Pos.	Estim. FTE	Amount	Amount	Amount	Direct Pos.	Estim. FTE	Amount
Federal Prison Industries	1,950	753	699,105	0	0	0	211,623	0	1,950	753	910,728
<b>Total Direct</b>	<b>1,950</b>	<b>753</b>	<b>699,105</b>	<b>0</b>	<b>0</b>	<b>0</b>	<b>211,623</b>	<b>0</b>	<b>1,950</b>	<b>753</b>	<b>910,728</b>
Balance Rescission			0								0
Total Direct with Rescission			699,105								910,728
Reimbursable FTE		0			0		0			0	
Total Direct and Reimb. FTE		753			0		0			753	
Other FTE:											
LEAP		0			0		0			0	
Overtime		0			0		0			0	
Grand Total, FTE		753			0		0			753	

**Reprogramming/Transfers**

**Carryover:**

**Recoveries/Refunds:**

I. Detail of Permanent Positions by Category

**Detail of Permanent Positions by Category**

Federal Prison System  
 Federal Prison Industries  
 (Dollars in Thousands)

Category	2019 Enacted		2020 Continuing Resolution		2021 Request						
	Direct Pos.	Reimb. Pos.	Direct Pos.	Reimb. Pos.	ATBs	Administrative/ Program Reduction	Buy-Back	Program Increases	Program Offsets	Total Direct Pos.	Total Reimb. Pos.
Correctional Institution Administration (006)	27	0	27	0	0	0	0	0	0	27	0
Clerical and Office Services (300-399)	71	0	71	0	0	0	0	0	0	71	0
Accounting and Budget (500-599)	79	0	79	0	0	0	0	0	0	79	0
Industrial Hygiene (0690)	1	0	1	0	0	0	0	0	0	1	0
Engineering and Architecture Group (800-899)	7	0	7	0	0	0	0	0	0	7	0
Attorneys (905)	3	0	3	0	0	0	0	0	0	3	0
Business & Industry (1100-1199)	192	0	192	0	0	0	0	0	0	192	0
Equipment/Facilities Services (1600-1699)	3	0	3	0	0	0	0	0	0	3	0
Training/Education (1700-1799)	1	0	1	0	0	0	0	0	0	1	0
Manufacturing Quality Control Group (1900-1999)	31	0	31	0	0	0	0	0	0	31	0
Supply Services (2000-2099)	1	0	1	0	0	0	0	0	0	1	0
Transportation (2100-2199)	2	0	2	0	0	0	0	0	0	2	0
Information Technology Mgmt (2210)	50	0	50	0	0	0	0	0	0	50	0
Ungraded (culinary, farm, mechanical, and construction)	1,482	0	1,482	0	0	0	0	0	0	1,482	0
<b>Total</b>	<b>1,950</b>	<b>0</b>	<b>1,950</b>	<b>0</b>	<b>0</b>	<b>0</b>	<b>0</b>	<b>0</b>	<b>0</b>	<b>1,950</b>	<b>0</b>
Headquarters (Washington, D.C.)	180	0	180	0	0	0	0	0	0	180	0
U.S. Field	1,770	0	1,770	0	0	0	0	0	0	1,770	0
Foreign Field	0	0	0	0	0	0	0	0	0	0	0
<b>Total</b>	<b>1,950</b>	<b>0</b>	<b>1,950</b>	<b>0</b>	<b>0</b>	<b>0</b>	<b>0</b>	<b>0</b>	<b>0</b>	<b>1,950</b>	<b>0</b>

Footnotes:

K. Summary of Requirements by Object Class

Summary of Requirements by Object Class

Federal Prison System  
 Federal Prison Industries  
 (Dollars in Thousands)

Object Class	2019 Actual		2020 Enacted		2021 Request		Increase/Decrease	
	Direct FTE	Amount	Direct FTE	Amount	Direct FTE	Amount	Direct FTE	Amount
11.1 Full-Time Permanent	621	52,112	753	62,337	753	75,260	0	12,923
11.3 Other than Full-Time Permanent	0	0	0	0	0	0	0	0
11.5 Other Personnel Compensation	0	2,413	0	2,413	0	2,413	0	0
<i>Overtime</i>	0	0	0	0	0	0	0	0
<i>Other Compensation</i>	0	2,413	0	2,413	0	2,413	0	0
11.8 Special Personal Services Payments	0	37,253	0	37,253	0	37,253	0	0
<b>Total</b>	<b>621</b>	<b>91,778</b>	<b>753</b>	<b>102,003</b>	<b>753</b>	<b>114,926</b>	<b>0</b>	<b>12,923</b>
<b>Other Object Classes</b>								
12.0 Personnel Benefits		30,694		34,311		39,135	0	4,824
21.0 Travel and Transportation of Persons		2,874		2,934		3,227	0	293
22.0 Transportation of Things		1,767		1,767		1,767	0	0
23.2 Rental Payments to Others		454		716		788	0	72
23.3 Communications, Utilities, and Miscellaneous Charges		9,359		10,992		12,091	0	1,099
24.0 Printing and Reproduction		915		915		915	0	0
25.2 Other Services from Non-Federal Sources		12,940		12,940		12,940	0	0
26.0 Supplies and Materials		519,303		519,304		551,211	0	31,907
31.0 Equipment		10,523		10,523		10,523	0	0
93.0 Other - Administrative Expenses		2,474		2,700		2,970	0	270
<b>Total Obligations</b>		<b>683,081</b>		<b>699,105</b>		<b>750,493</b>	<b>0</b>	<b>51,388</b>
Subtract - Unobligated Balance, Start-of-Year		-177,127		-211,623		-211,623	0	0
Subtract - Transfers/Reprogramming		0		0		0	0	0
Subtract - Recoveries/Refunds		0		0		0	0	0
Add - Unobligated End-of-Year, Available		211,623		211,623		211,623	0	0
Add - Unobligated End-of-Year, Expiring		0		0		0	0	0
<b>Total Direct Requirements</b>	<b>0</b>	<b>717,577</b>	<b>0</b>	<b>699,105</b>	<b>0</b>	<b>750,493</b>	<b>0</b>	<b>51,388</b>
Reimbursable FTE								
Full-Time Permanent	0		0		0		0	
23.1 Rental Payments to GSA (Reimbursable)		0		0		0		0
25.3 Other Goods and Services from Federal Sources - DHS Security (Reimbursable)		0		0		0		0



**Federal Prison Industries  
(Dollars in Thousands)**

	FY 2021 President's Budget				
	Pos.	Atty	Agents	FTE	Amount
<b>2020 Enacted</b>	<b>[1,950]</b>	<b>[3]</b>	<b>0</b>	<b>753</b>	<b>2,700</b>
<b>Technical Adjustments</b>					
CR Base Adjustment	0	0	0	0	0
Restoration of Rescission - FPI	0	0	0	0	0
<b>Subtotal, Technical Adjustments</b>	<b>0</b>	<b>0</b>	<b>0</b>	<b>0</b>	<b>0</b>
<b>Base Adjustments</b>					
<b>Subtotal, Base Adjustments</b>					
<b>Subtotal, Technical and Base Adjustments</b>	<b>0</b>	<b>0</b>	<b>0</b>	<b>0</b>	<b>0</b>
<b>2020 Current Services w/o Reimb FTE</b>	<b>[0]</b>	<b>[0]</b>	<b>0</b>	<b>0</b>	<b>0</b>
<b>Program Changes</b>					
Program Increase					
Program Decrease					
<b>Total Program Changes</b>					
<b>2021 Total Request w/o Reimb FTE</b>	<b>[1,950]</b>	<b>[3]</b>	<b>0</b>	<b>753</b>	<b>2,700</b>