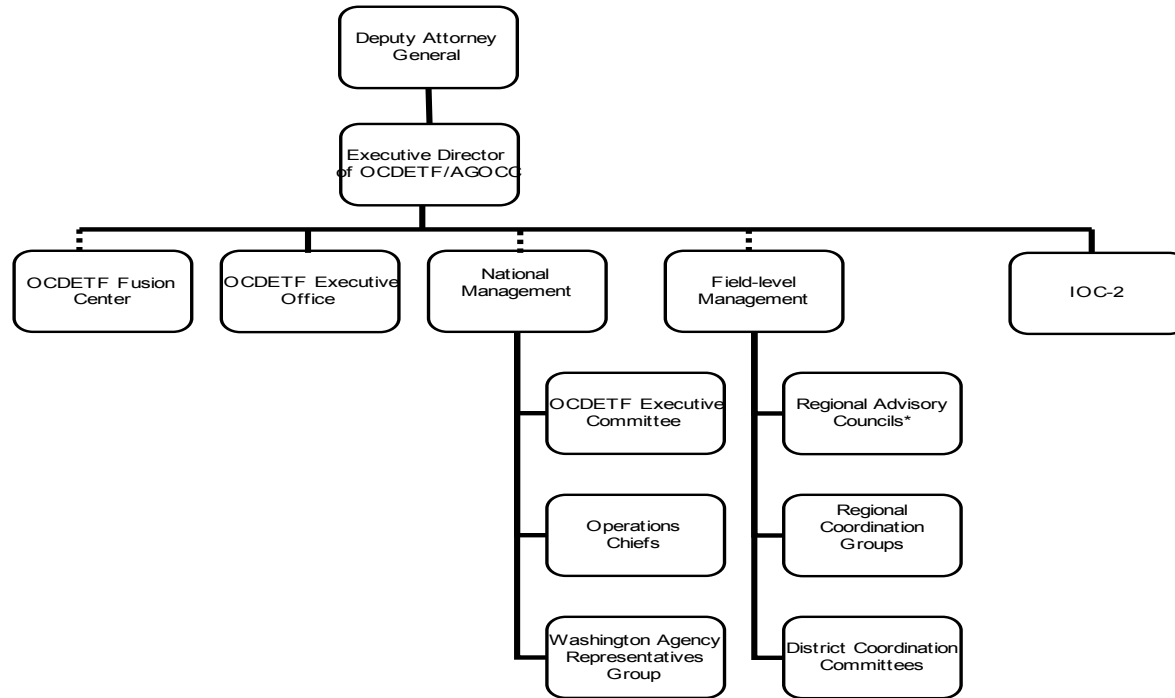


## A: Organizational Chart

A: Organizational Chart

# OCDETF Organizational Chart



•Each of the nine OCDETF Regions is structured the same way with a Regional Advisory Council, a Regional Coordination Group and a District Coordination Committee in each judicial district in the region. Thus, there are a total of 94 District Coordination Committees.

•Dashed lines (--) indicate oversight responsibility rather than direct reporting authority. These entities are accountable to the OCDETF Director and DAG for program performance and use of program resources.

B. Summary of Requirements

**Summary of Requirements**  
 Interagency Crime & Drug Enforcement  
 Salaries and Expenses  
 (Dollars in Thousands)

	FY 2017 Request		
	Direct Pos.	Estimate FTE	Amount
<b>2015 Enacted 1/</b>	[3,051]	[2,907]	507,194
<b>Total 2015 Enacted</b>	[3,051]	[2,907]	507,194
<b>2016 Enacted</b>	[2,935]	[2,882]	512,000
<b>Base Adjustments</b>			
Pay and Benefits	0	0	4,421
Domestic Rent and Facilities	0	0	-15
<b>Total Base Adjustments</b>	<b>0</b>	<b>0</b>	<b>4,406</b>
<b>Total Technical and Base Adjustments</b>	<b>0</b>	<b>0</b>	<b>4,406</b>
<b>2017 Current Services</b>	[2,935]	[2,882]	516,406
<b>Program Changes</b>			
Increases:			
Priority Transnational Organized Crime	0	0	1,500
OCDETF Transnational Drug Prosecutions	[4]	[2]	436
Priority Co-Located Strike Forces/Southwest Border	[36]	[18]	3,793
Subtotal, Increases	[40]	[20]	5,729
<b>Total Program Changes</b>	<b>[40]</b>	<b>[20]</b>	<b>5,729</b>
<b>2017 Total Request</b>	<b>[2,975]</b>	<b>[2,902]</b>	<b>522,135</b>
2016 - 2017 Total Change	[40]	[20]	10,135

<sup>1/</sup> FY 2015 FTE is actual

B. Summary of Requirements

**Summary of Requirements**  
 Interagency Crime & Drug Enforcement  
 Salaries and Expenses  
 (Dollars in Thousands)

Program Activity	FY 2015 Appropriation Enacted			FY 2016 Enacted			FY 2017 Technical and Base Adjustments			FY 2017 Current Services		
	Direct Pos.	Actual FTE	Amount	Direct Pos.	Est. FTE	Amount	Direct Pos.	Est. FTE	Amount	Direct Pos.	Est. FTE	Amount
Investigations	[2,001]	[1,911]	355,027	[1,885]	[1,884]	356,597	0	0	3,064	[1,885]	[1,884]	359,661
Prosecutions	[1,050]	[996]	152,167	[1,050]	[998]	155,403	0	0	1,342	[1,050]	[998]	156,745
<b>Total Direct</b>	<b>[3,051]</b>	<b>[2,907]</b>	<b>507,194</b>	<b>[2,935]</b>	<b>[2,882]</b>	<b>512,000</b>	<b>0</b>	<b>0</b>	<b>4,406</b>	<b>[2,935]</b>	<b>[2,882]</b>	<b>516,406</b>
Balance Rescission			0			0			0			0
<b>Total Direct with Rescission</b>			<b>507,194</b>			<b>512,000</b>			<b>4,406</b>			<b>516,406</b>
Reimbursable FTE		0			0			0			0	
<b>Total Direct and Reimb. FTE</b>		<b>[2,907]</b>			<b>[2,882]</b>			<b>0</b>			<b>[2,882]</b>	
Other FTE:												
LEAP		0			0			0			0	
Overtime		0			0			0			0	
<b>Grand Total, FTE</b>		<b>[2,907]</b>			<b>[2,882]</b>			<b>0</b>			<b>[2,882]</b>	

Program Activity	2017 Increases			2017 Offsets			2017 Request		
	Direct Pos.	Est. FTE	Amount	Direct Pos.	Est. FTE	Amount	Direct Pos.	Est. FTE	Amount
Investigations	0	0	1,050	0	0	0	[1,885]	[1,884]	360,711
Prosecutions	[40]	[20]	4,679	0	0	0	[1,090]	[1,018]	161,424
<b>Total Direct</b>	<b>[40]</b>	<b>[20]</b>	<b>5,729</b>	<b>0</b>	<b>0</b>	<b>0</b>	<b>[2,975]</b>	<b>[2,902]</b>	<b>522,135</b>
Balance Rescission			0			0			0
<b>Total Direct with Rescission</b>			<b>5,729</b>			<b>0</b>			<b>522,135</b>
Reimbursable FTE		0			0			0	
<b>Total Direct and Reimb. FTE</b>		<b>[20]</b>			<b>0</b>			<b>[2,902]</b>	
Other FTE:									
LEAP		0			0			0	
Overtime		0			0			0	
<b>Grand Total, FTE</b>		<b>[20]</b>			<b>0</b>			<b>[2,902]</b>	

### FY 2017 Program Increases/Offsets by Decision Unit

Interagency Crime & Drug Enforcement

Salaries and Expenses

(Dollars in Thousands)

Program Increases	Location of Description by Program Activity	Investigations				Prosecutions			
		Direct Pos.	Agt./Atty.	Est. FTE	Amount	Direct Pos.	Agt./Atty.	Est. FTE	Amount
Priority Transnational Organized Crime		0	0	0	1,050	0	0	0	450
OCDETF Transnational Drug Prosecutions		0	0	0	0	[4]	[3]	[2]	436
Priority Co-Located Strike Forces/Southwest Border		0	0	0	0	[36]	[24]	[18]	3,793
<b>Total Program Increases</b>		<b>0</b>	<b>0</b>	<b>0</b>	<b>1,050</b>	<b>[40]</b>	<b>[27]</b>	<b>[20]</b>	<b>4,679</b>

Program Increases	Location of Description by Program Activity	Total Increases			
		Direct Pos.	Agt./Atty.	Est. FTE	Amount
Priority Transnational Organized Crime		0	0	0	1,500
OCDETF Transnational Drug Prosecutions		[4]	[3]	[2]	436
Priority Co-Located Strike Forces/Southwest Border		[36]	[24]	[18]	3,793
<b>Total Program Increases</b>		<b>[40]</b>	<b>[27]</b>	<b>[20]</b>	<b>5,729</b>

**Resources by Department of Justice Strategic Goal and Objective**  
 Interagency Crime & Drug Enforcement  
 Salaries and Expenses  
 (Dollars in Thousands)

Strategic Goal and Strategic Objective	FY 2015 Appropriation Enacted		FY 2016 Enacted		FY 2017 Current Services		FY 2017 Increases		FY 2017 Offsets		FY 2017 Total Request	
	Direct & Reimb FTE	Direct Amount	Direct & Reimb FTE	Direct Amount	Direct & Reimb FTE	Direct Amount	Direct & Reimb FTE	Direct Amount	Direct & Reimb FTE	Direct Amount	Direct & Reimb FTE	Direct Amount
<b>Goal 2 Prevent crime, protect the rights of the American people, and enforce federal law</b>												
2.1 Combat the threat, incidence, and prevalence of violent crime by leveraging strategic partnerships to investigate, arrest, and prosecute violent offenders and illegal firearms traffickers.	[320]	54,168	[316]	54,618	[316]	55,089	0	613	0	0	[316]	55,702
2.3 Disrupt and dismantle major drug trafficking organizations to combat the threat, trafficking, and use of illegal drugs and the diversion of licit drugs.	[2,587]	452,066	[2,566]	455,822	[2,566]	459,757	[20]	5,116	0	0	[2,586]	464,873
2.4 Investigate and prosecute corruption, economic crimes, and transnational organized crime.	0	960	0	1,560	0	1,560	0	0	0	0	0	1,560
<b>Subtotal, Goal 2</b>	<b>[2,907]</b>	<b>507,194</b>	<b>[2,882]</b>	<b>512,000</b>	<b>[2,882]</b>	<b>516,406</b>	<b>[20]</b>	<b>5,729</b>	<b>0</b>	<b>0</b>	<b>[2,902]</b>	<b>522,135</b>
<b>TOTAL</b>	<b>[2,907]</b>	<b>507,194</b>	<b>[2,882]</b>	<b>512,000</b>	<b>[2,882]</b>	<b>516,406</b>	<b>[20]</b>	<b>5,729</b>	<b>0</b>	<b>0</b>	<b>[2,902]</b>	<b>522,135</b>

**Justifications for Technical and Base Adjustments**  
 Interagency Crime & Drug Enforcement  
 Salaries and Expenses  
 (Dollars in Thousands)

	Direct Pos.	Estimate FTE	Amount
<b>Pay and Benefits</b>			
1 <u>2017 Pay Raise - 1.6%</u> This request provides for a proposed 1.6 percent pay raise to be effective in January 2017. The amount requested, \$4,760, represents the pay amount for 3/4 of the fiscal year plus appropriate benefits (\$3,332 for pay and \$1,428 for benefits).	0	0	4,760
2 <u>Annualization of 2016 Pay Raise</u> This pay annualization represents first quarter amounts (October through December) of the 2016 pay increase of 1.3 percent included in the 2016 President's Budget. The amount requested \$1,658, represents the pay amounts for 1/4 of the fiscal year plus appropriate benefits (\$1,161 for pay and \$497 for benefits).	0	0	1,658
3 <u>Changes in Compensable Days</u> The decreased cost for two compensable days in FY 2017 compared to FY 2016 is calculated by dividing the FY 2016 estimated personnel compensation \$296,540 and applicable benefits \$93,937 by 262 compensable days is - \$2,982.	0	0	-2,982
4 <u>Health Insurance</u> Effective January 2017, the component's contribution to Federal employees' health insurance increases by 4 percent. Applied against the 2016 estimate of \$20,474, the additional amount required is \$727.	0	0	727
5 <u>Retirement</u> Agency retirement contributions increase as employees under CSRS retire and are replaced by FERS employees. Based on U.S. Department of Justice Agency estimates, we project that the DOJ workforce will convert from CSRS to FERS at a rate of 0.8 percent per year, for both LEO and Non-LEO, based on the past 5 years of DOJ retirement data. The requested increase of \$258 is necessary to meet our increased retirement obligations as a result of this conversion.	0	0	258
<b>Subtotal, Pay and Benefits</b>	<b>0</b>	<b>0</b>	<b>4,421</b>

### Justifications for Technical and Base Adjustments

Interagency Crime & Drug Enforcement  
Salaries and Expenses  
(Dollars in Thousands)

	Direct Pos.	Estimate FTE	Amount
<b>Domestic Rent and Facilities</b>			
1 <u>GSA Rent</u> GSA will continue to charge rental rates that approximate those charged to commercial tenants for equivalent space and related services. A decrease of \$20 is required to meet our commitment to GSA. The costs associated with GSA rent were derived through use of an automated system, which uses the latest inventory data, including rate increases to be effective FY 2017 for each building currently occupied by Department of Justice components, as well as the costs of new space to be occupied.	0	0	-20
2 <u>Guard Service</u> This includes Department of Homeland Security (DHS) Federal Protective Service charges, Justice Protective Service charges and other security services across the country. The requested increase of \$5 is required to meet these commitments.	0	0	5
<b>Subtotal, Domestic Rent and Facilities</b>	<b>0</b>	<b>0</b>	<b>-15</b>
<b>TOTAL DIRECT TECHNICAL and BASE ADJUSTMENTS</b>	<b>0</b>	<b>0</b>	<b>4,406</b>

**Crosswalk of 2015 Availability**  
 Interagency Crime & Drug Enforcement  
 Salaries and Expenses  
 (Dollars in Thousands)

Program Activity	FY 2015 Appropriation Enacted			Reprogramming/Transfers			Carryover	Recoveries/ Refunds	FY 2015 Availability		
	Direct Pos.	Actual FTE	Amount	Direct Pos.	Actual FTE	Amount	Amount	Amount	Direct Pos.	Actual FTE	Amount
Investigations	[2,001]	[1,911]	355,027	0	0	0	2,955	9,816	[2,001]	[1,911]	367,798
Prosecutions	[1,050]	[996]	152,167	0	0	0	1,266	948	[1,050]	[996]	154,381
<b>Total Direct</b>	<b>[3,051]</b>	<b>[2,907]</b>	<b>507,194</b>	<b>0</b>	<b>0</b>	<b>0</b>	<b>4,221</b>	<b>10,764</b>	<b>[3,051]</b>	<b>[2,907]</b>	<b>522,179</b>
Balance Rescission			0			0	0	0			0
Total Direct with Rescission			507,194			0	4,221	10,764			522,179
Reimbursable FTE		0			0					0	
Total Direct and Reimb. FTE		[2,907]			0					[2,907]	
Other FTE:											
LEAP FTE		0			0					0	
Overtime		0			0					0	
Grand Total, FTE		[2,907]			0					[2,907]	

**Reprogramming/Transfers:**

**Carryover:**

Funds were carried forward from the FY 2014 ICDE no year account.

**Recoveries/Refunds:**

Represents allocated funds that participating agencies returned.



**Crosswalk of 2016 Availability**  
 Interagency Crime & Drug Enforcement  
 Salaries and Expenses  
 (Dollars in Thousands)

Program Activity	FY 2016 Enacted			Reprogramming/Transfers			Carryover	Recoveries/ Refunds	FY 2016 Availability		
	Direct Pos.	Est. FTE	Amount	Direct Pos.	Est. FTE	Amount	Amount	Amount	Direct Pos.	Est. FTE	Amount
Investigations	[1,885]	[1,884]	356,597	0	0	0	5,590	0	[1,885]	[1,884]	362,187
Prosecutions	[1,050]	[998]	155,403	0	0	0	2,395	0	[1,050]	[998]	157,798
<b>Total Direct</b>	<b>[2,935]</b>	<b>[2,882]</b>	<b>512,000</b>	<b>0</b>	<b>0</b>	<b>0</b>	<b>7,985</b>	<b>0</b>	<b>[2,935]</b>	<b>[2,882]</b>	<b>519,985</b>
Balance Rescission			0			0	0	0			0
Total Direct with Rescission			512,000			0	7,985	0			519,985
Reimbursable FTE		0			0					0	
Total Direct and Reimb. FTE		[2,882]			0					[2,882]	
Other FTE:											
LEAP FTE		0			0					0	
Overtime		0			0					0	
Grand Total, FTE		[2,882]			0					[2,882]	

**Reprogramming/Transfers:**

**Carryover:**

SF 132/133 has \$7,984,970.11 carryover in no year account.

### Summary of Reimbursable Resources

Interagency Crime & Drug Enforcement

Salaries and Expenses

(Dollars in Thousands)

Collections by Source	2015 Actual			2016 Estimate			2017 Request			Increase/Decrease		
	Reimb. Pos.	Reimb. FTE	Amount	Reimb. Pos.	Reimb. FTE	Amount	Reimb. Pos.	Reimb. FTE	Amount	Reimb. Pos.	Reimb. FTE	Amount
Asset Forfeiture Fund	0	0	45,718	0	0	45,551	0	0	45,551	0	0	0
<b>Budgetary Resources</b>	<b>0</b>	<b>0</b>	<b>45,718</b>	<b>0</b>	<b>0</b>	<b>45,551</b>	<b>0</b>	<b>0</b>	<b>45,551</b>	<b>0</b>	<b>0</b>	<b>0</b>

Obligations by Program Activity	2015 Actual			2016 Estimate			2017 Request			Increase/Decrease		
	Reimb. Pos.	Reimb. FTE	Amount	Reimb. Pos.	Reimb. FTE	Amount	Reimb. Pos.	Reimb. FTE	Amount	Reimb. Pos.	Reimb. FTE	Amount
Investigations	0	0	42,642	0	0	41,377	0	0	41,377	0	0	0
Prosecutions	0	0	3,076	0	0	4,174	0	0	4,174	0	0	0
Transnational Organized Crime	0	0	0	0	0	0	0	0	0	0	0	0
<b>Budgetary Resources</b>	<b>0</b>	<b>0</b>	<b>45,718</b>	<b>0</b>	<b>0</b>	<b>45,551</b>	<b>0</b>	<b>0</b>	<b>45,551</b>	<b>0</b>	<b>0</b>	<b>0</b>

I. Detail of Permanent Positions by Category

**Detail of Permanent Positions by Category**  
 Interagency Crime & Drug Enforcement  
 Salaries and Expenses  
 (Dollars in Thousands)

Category	FY 2015 Enacted		FY 2016 Enacted		FY 2017 Request				
	Direct Pos.	Reimb. Pos.	Direct Pos.	Reimb. Pos.	ATBs	Program Increases	Program Offsets	Total Direct Pos.	Total Reimb. Pos.
Intelligence Series (132)	[148]	0	[148]	0	0	0	0	[148]	0
Personnel Management (0200-0260)	[1]	0	[1]	0	0	0	0	[1]	0
Clerical and Office Services (0300-0399)	[552]	0	[519]	0	0	0	0	[519]	0
Accounting and Budget (500-599)	[25]	0	[25]	0	0	0	0	[25]	0
Paralegals / Other Law (900-998)	[77]	0	[77]	0	0	[13]	0	[90]	0
Attorneys (905)	[573]	0	[573]	0	0	[27]	0	[600]	0
Information & Arts (1000-1099)	[11]	0	[11]	0	0	0	0	[11]	0
Business & Industry (1100-1199)	[6]	0	[6]	0	0	0	0	[6]	0
Misc. Inspectors/Investigative Assistants (1802)	[88]	0	[88]	0	0	0	0	[88]	0
Criminal Investigative Series (1811)	[1,449]	0	[1,366]	0	0	0	0	[1,366]	0
Information Technology Mgmt (2210-2299)	[13]	0	[13]	0	0	0	0	[13]	0
Motor Vehicle Operations (5703)	[108]	0	[108]	0	0	0	0	[108]	0
<b>Total</b>	<b>[3,051]</b>	<b>0</b>	<b>[2,935]</b>	<b>0</b>	<b>0</b>	<b>[40]</b>	<b>0</b>	<b>[2,975]</b>	<b>0</b>
Headquarters Washington D.C.	[61]	0	[65]	0	0	[4]	0	[69]	0
US Fields	[2,990]	0	[2,862]	0	0	[36]	0	[2,898]	0
Foreign Field	0	0	[8]	0	0	0	0	[8]	0
<b>Total</b>	<b>[3,051]</b>	<b>0</b>	<b>[2,935]</b>	<b>0</b>	<b>0</b>	<b>[40]</b>	<b>0</b>	<b>[2,975]</b>	<b>0</b>

**Financial Analysis of Program Changes**  
 Interagency Crime & Drug Enforcement  
 Salaries and Expenses  
 (Dollars in Thousands)

Grades	Investigations				Prosecutions				Total Program Changes	
	Program Increases		Program Decreases		Program Increases		Program Decreases		Direct Pos.	Amount
	Direct Pos.	Amount	Direct Pos.	Amount	Direct Pos.	Amount	Direct Pos.	Amount		
GS-15	0	0	0	0	[24]	3,408	0	0	[24]	3,408
GS-14	0	0	0	0	[3]	372	0	0	[3]	372
GS-9	0	0	0	0	[13]	678	0	0	[13]	678
<b>Total Positions and Annual Amount</b>	<b>0</b>	<b>0</b>	<b>0</b>	<b>0</b>	<b>[40]</b>	<b>4,458</b>	<b>0</b>	<b>0</b>	<b>[40]</b>	<b>4,458</b>
Lapse (-)	0	0	0	0	-[20]	-1,498	0	0	-[20]	-1,498
11.5 - Other personnel compensation		0		0		0		0		0
<b>Total FTEs and Personnel Compensation</b>	<b>0</b>	<b>0</b>	<b>0</b>	<b>0</b>	<b>[20]</b>	<b>2,960</b>	<b>0</b>	<b>0</b>	<b>[20]</b>	<b>2,960</b>
12.1 - Civilian personnel benefits		0		0		1,269		0		1,269
25.2 - Other services from non-federal sources		1,050		0		450		0		1,500
<b>Total Program Change Requests</b>	<b>0</b>	<b>1,050</b>	<b>0</b>	<b>0</b>	<b>[20]</b>	<b>4,679</b>	<b>0</b>	<b>0</b>	<b>[20]</b>	<b>5,729</b>

**Summary of Requirements by Object Class**  
 Interagency Crime & Drug Enforcement  
 Salaries and Expenses  
 (Dollars in Thousands)

Object Class	FY 2015 Actual		FY 2016 Enacted		FY 2017 Request		Increase/Decrease	
	Act. FTE	Amount	Direct FTE	Amount	Direct FTE	Amount	Direct FTE	Amount
11.1 - Full-time permanent	[2,907]	284,626	[2,882]	287,692	[2,902]	293,747	20	6,055
11.3 - Other than full-time permanent	0	887	0	903	0	903	0	0
11.5 - Other personnel compensation	0	36,666	0	37,318	0	37,318	0	0
<i>Overtime</i>	0	0	0	0	0	0	0	0
<i>Other Compensation</i>	0	0	0	0	0	0	0	0
11.8 - Special personal services payments	0	0	0	0	0	0	0	0
<b>Total</b>	<b>[2,907]</b>	<b>322,179</b>	<b>[2,882]</b>	<b>325,913</b>	<b>[2,902]</b>	<b>331,968</b>	<b>20</b>	<b>6,055</b>
<b>Other Object Classes</b>								
12.1 - Civilian personnel benefits		114,443		115,141		117,736	0	2,595
21.0 - Travel and transportation of persons		4,817		4,903		4,903	0	0
22.0 - Transportation of things		77		78		78	0	0
23.1 - Rental payments to GSA		5,982		7,033		7,013	0	-20
23.2 - Rental payments to others		184		188		193	0	5
23.3 - Communications, utilities, and miscellaneous charges		5,308		5,403		5,403	0	0
24.0 - Printing and reproduction		73		74		74	0	0
25.1 - Advisory and assistance services		8,472		8,623		8,623	0	0
25.3 - Other goods and services from federal sources		45,917		45,789		39,304	0	-6,485
25.4 - Operation and maintenance of facilities		1,051		1,069		1,069	0	0
25.5 - Research and development of contracts		3		3		3	0	0
25.6 - Medical care		2		2		2	0	0
25.7 - Operation and maintenance of equipment		1,046		1,064		1,064	0	0
25.8 - Subsistence and support of persons		154		157		157	0	0
26.0 - Supplies and materials		1,333		1,357		1,357	0	0
31.0 - Equipment		2,947		3,000		3,000	0	0
32.0 - Land and structures		183		186		186	0	0
42.0 - Insurance claims and indemnities		2		2		2	0	0
<b>Total Obligations</b>		<b>514,173</b>		<b>519,985</b>		<b>522,135</b>	<b>0</b>	<b>2,150</b>
<b>Net of:</b>								
Unobligated Balance, Start-of-Year		-4,221		-7,985		0	0	7,985
Transfers/Reprogramming		0		0		0	0	0
Recoveries/Refunds		-10,764		0		0	0	0
Balance Rescission		0		0		0	0	0
Unobligated End-of-Year, Available		7,985		0		0	0	0
Unobligated End-of-Year, Expiring		21		0		0	0	0
<b>Total Direct Requirements</b>		<b>507,194</b>		<b>512,000</b>		<b>522,135</b>		<b>10,135</b>
Reimbursable FTE								
Full-Time Permanent	0		0		0		0	0

## **Interagency Crime Drug Enforcement Task Force**

### **Status of Congressionally Requested Studies, Reports, and Evaluations**

1. This Act (P.L. 114-113 FY16 Omnibus Title II) includes \$512,000,000 for the Organized Crime and Drug Enforcement Task Forces. While the decision unit designations proposed in the House report are not adopted, the Department shall identify funding provided for such units in its fiscal year 2016 spending plan and the fiscal year 2017 budget request. Submitted with the 2017 Congressional submission.
2. HRPT - 114, Title II, page 37 directs the Department to submit an updated report, with the fiscal year 2017 budget, on the actual and projected investigative and prosecutorial FTE devoted to OCDETF cases in fiscal years 2015-2017, broken out by agency and funding source. Submitted with the 2017 Congressional Submission.
3. The Committee directs (SRPT Title II, page 100) the Department of Justice to report within 90 days of enactment of this act on the Department's continued presence and ongoing resource requirements in the Bakken oil region, including both law enforcement and prosecutorial components. The Department shall also include an updated analysis of crime trends in the region in its report.